



- Fixtured for shop use or field use.
- Jack-operated for easy, portable fixes.
- Fast, professional repairs on the farm or ranch.
- Compact: requires minimum space.
- Only 50 pounds

(Pushers and dies sold separately)

Thank you for your purchase!
If you have any feedback or
questions please contact us:

Kurt Hydraulics // A Division Of Kurt Manufacturing

302 Jeffers Avenue, Lyman, NE 69352
Phone 308-787-0127 | Toll Free: 866-257-7995
Fax 308-787-1281

kurthydraulics.com | hydraulicsales@kurt.com

Manual Revision:
06.13.2025

KURT 2000 SWAGER

Operating Instruction Manual



(Pushers and dies sold separately)

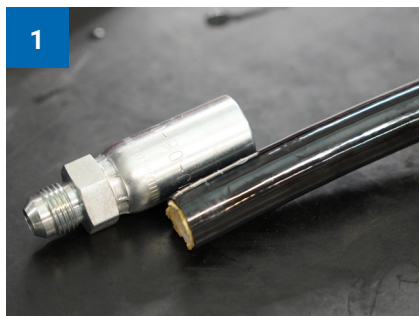
Thank you for purchasing the Kurt 2000 Swager. This product is designed for shop or portable use and can be used on any solid surface with a C-clamp holding the unit in place. Follow the directions below and hose repairs can be made in just minutes. Always be sure to use manufacturer

spec for proper hose and coupling combinations and final swaged coupling dimensions. Pushers and dies are sold separately.

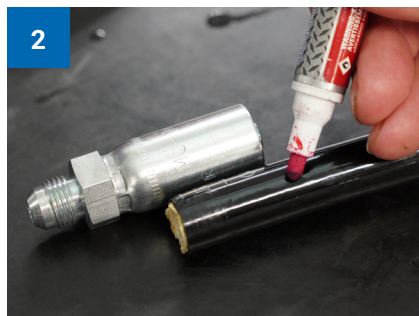


CAUTION

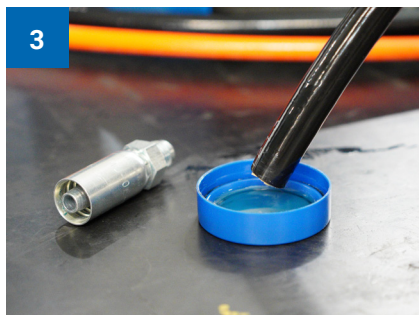
Always follow manufacturer crimp specs when possible.



Establish hose insertion depth using the coupling you're going to swage.



Mark insertion depth.



Lightly lubricate hose end to ease coupling insertion



Push coupling to the marked insertion depth.



Install the pusher into the pusher block and tighten the thumb screw

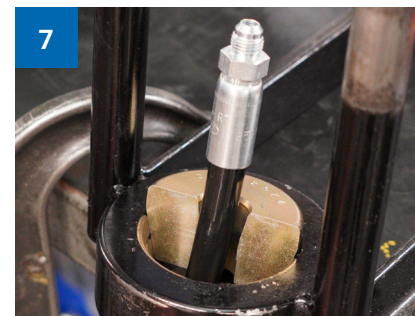


Install the first die half in the machine base.



PRO TIP

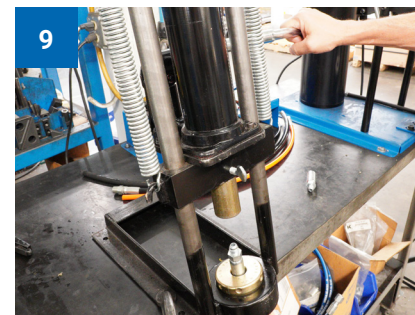
Spray the die halves with spray wax to ease coupling and die release after swaging.



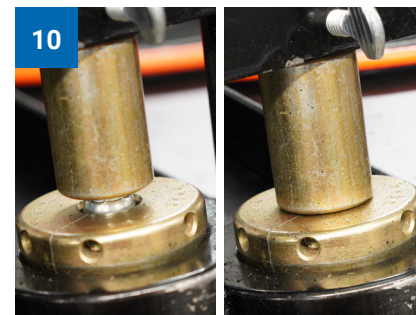
Install the hose assembly up through the base and into the pusher.



Next, insert the second die half into the die base.



Jack swager downward until the pusher is 1/4" from the die halves. (middle right)



For synthetic hose, continue until the pusher contacts die halves. (at right)



Release the pressure valve, remove die and hose from base. (Spray wax or engine assembly lube will help coupling release)



Inspect assembly for gaps between the hose and coupling. Repeat steps 5 - 10 using a smaller die set if needed.